

INTEGRATION

CALCULATOR

1) Evaluate the following.

a) $\int (6x^3 - 3x^2 + 8x - 5)dx$

b) $\int \left(\frac{8x^3 - 6x^2}{4x} \right) dx$

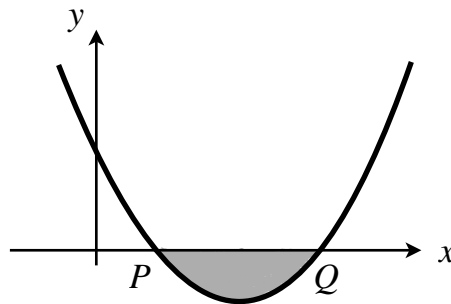
c) $\int (4\sqrt{x} - 12\sqrt[3]{x})dx$

d) $\int_1^6 (3x^2 - 12)dx$

e) $\int_4^9 \left(\frac{5}{\sqrt{x}} \right) dx$

f) $\int_{-3}^9 (2x - 3)(9 - x)dx$

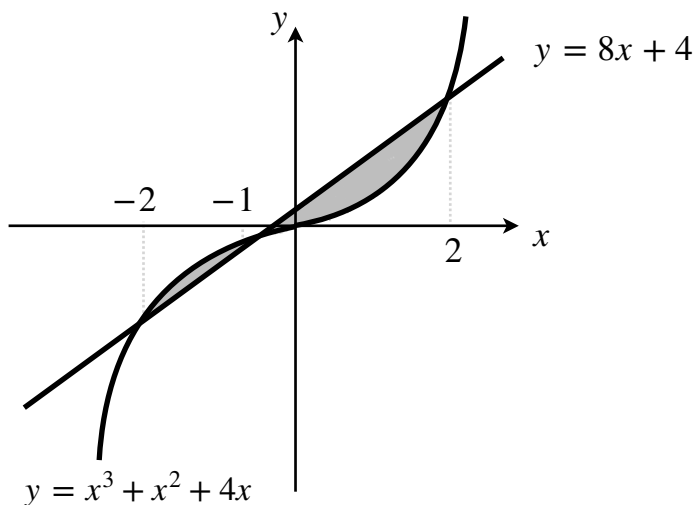
2) Below is the graph of the function $y = x^2 - 7x + 10$.



a) Calculate the x coordinates of the roots P and Q

b) Calculate the shaded area.

3) The diagram below shows the graph of the function $y = 8x + 4$ and $y = x^3 + x^2 + 4x$.



Work out the total area enclosed by the two curves.