

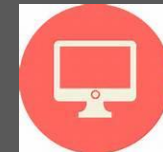


A History of Leith

At Home Learning - May/June 2020



The History of Leith



Learning Intentions



- To **learn** about the local history of Leith
- To **create** a walking tour of local landmarks
- To **explain** why the landmarks chosen are significant and explain the history behind them



Local History

Often, you can live in a place your whole life and never really know anything about it.

Local history is all around us and we can walk past it without realising it.

But often tourists will come and visit these landmarks.

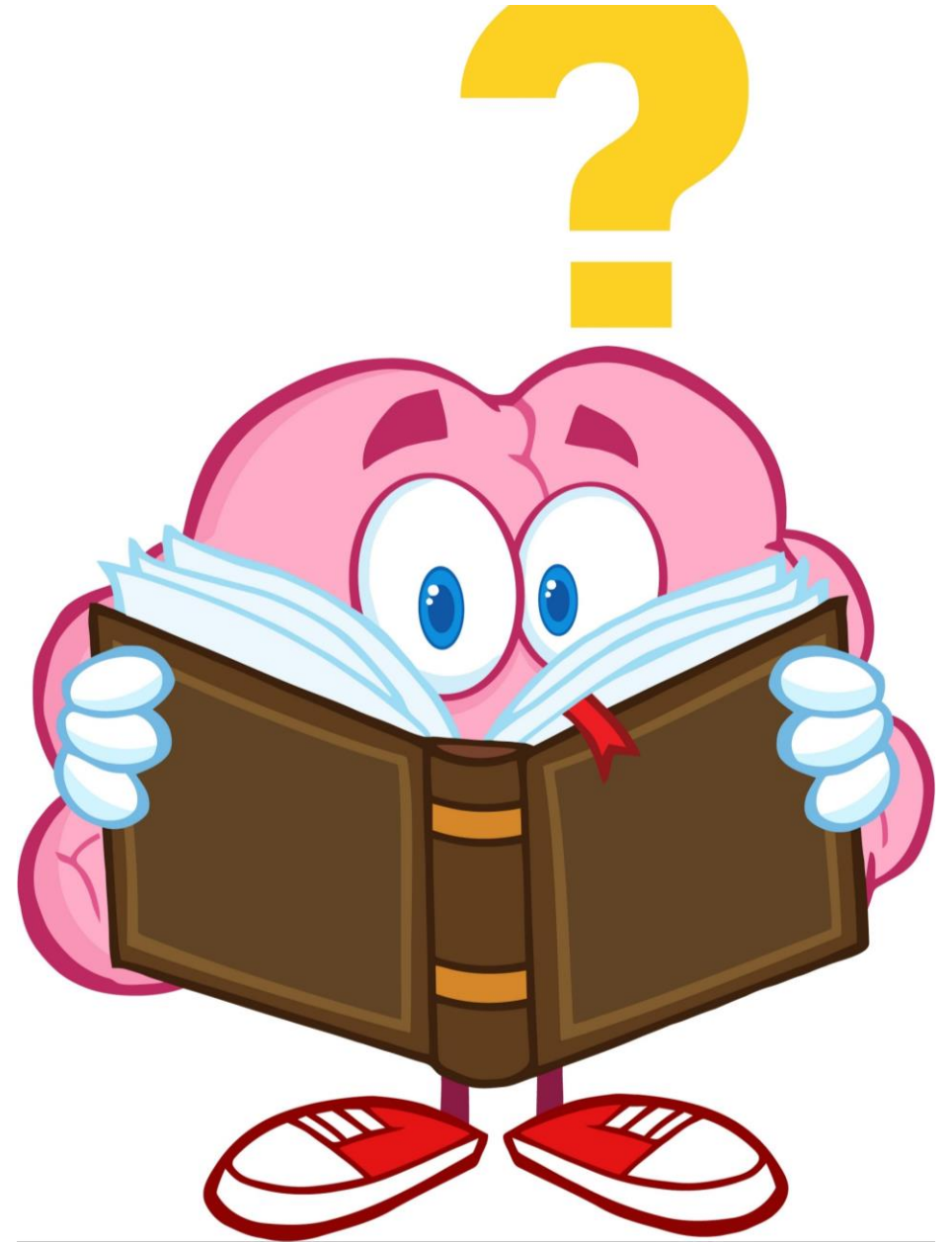
Over the next few weeks you are going to be learning about some of Leith's history and hopefully taking family on a walking tour that you will plan.



What's the plan?

- First, we need to do some research on places in Leith that have historical significance.
- Find 8 places. Write about why they are important.
 - Where is it?
 - What happened there?
 - When did it happen?
 - Who was there?

You will need your research for the next lesson!



Places in Leith

If you know some interesting facts about Leith we would love to hear them!



To help, here is a list of some places in Leith that you could research

- North Leith Parish Church
- South Leith Parish Church
- Leith Links
- Leith Fort
- Leith Tram
- Old Leith Kirkgate
- Plaque above Greggs
- Trinity House
- Citadel Building
- Andrew Lambs House
- Old Leith Bridge
- Trinity House
- Cromwell's Arch
- Signal Tower building



Websites to Help

http://www.leithlocalhistorysociety.org.uk/maps/leith_interactive_map.htm

<https://inews.co.uk/inews-lifestyle/travel/exploring-leith-hidden-history-edinburgh-526130>





Watch out for the next set of work on the school website.
